



Bruce Campbell
083 226 2015
bruce@natalproperty.co.za

Contact Pietermaritzburg

033 345 1515

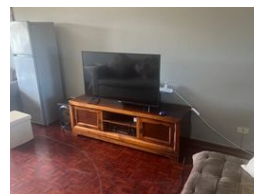
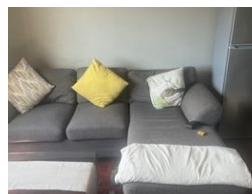
Property House
78 Commercial Road (78 Chief Albert Luthuli
Road)
Pietermaritzburg
3201

SOLD



SOLE MANDATE

Web Ref 6855974



R520,000

🛏 1 🚿 0

Monthly Bond Repayment R5,367.38
Calculated over 20 years at 11% with no deposit.

Transfer Costs R21,217.00 **Bond Costs** R15,795.00
These calculations are only a guide. Please ask your conveyancer for exact calculations.

Monthly Levy R1,114 **Monthly Rates** R800

A NEAT FLAT WITH A VIEW

This delightful apartment is situated close to GHS and shops and offers a lounge and dining room with parquet wooden floors and pleasant views.

The unit features a modern fitted kitchen with undercounter oven and hob, and a spacious bedroom with BICS opening onto a study or small kids bedroom. The bathroom has a bath and shower and there is a designated covered carport.

Remote access.

Call Bruce Campbell

Features

Interior

Bedrooms	1
Kitchens	1
Recep. Rooms	2

Exterior

Carports / Parkings	1
Security	No
Pool	No

Sizes

Floor Size	72m²
------------	------