

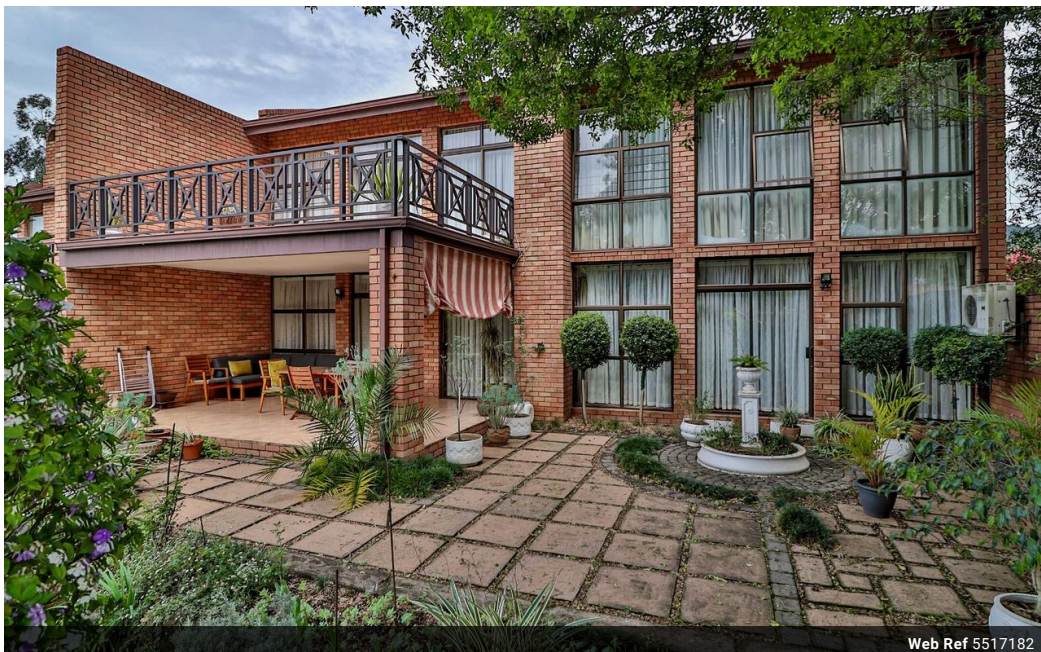


**Bruce Campbell**  
083 226 2015  
bruce@natalproperty.co.za

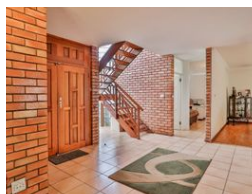
Contact Pietermaritzburg

033 345 1515

Property House  
78 Commercial Road (78 Chief Albert Luthuli  
Road)  
Pietermaritzburg  
3201



Web Ref 5517182



**R3,300,000**

 4  2.5  2

**Monthly Bond Repayment** R33,502.56

Calculated over 20 years at 10.75% with no deposit.

**Transfer Costs** R197,547.00 **Bond Costs** R45,955.00

These calculations are only a guide. Please ask your conveyancer for exact calculations.

**Monthly Levy** R3,000 **Monthly Rates** R3,203

## A LUXURIOUS TOWNHOUSE

This spacious home (351m<sup>2</sup>) in a popular secure estate offers very comfortable complex living with pleasant views and a communal swimming pool and tennis court. The home features aluminum windows, both tiles and laminated flooring, air conditioning, fireplace in formal lounge and luxury fittings and finishes.

Downstairs is a large entrance hall, 2 lounges, dining room, study and guest cloakroom, a modern fitted kitchen with granite tops and built-in oven and hob, plus a large entertainment verandah which overlooks a pretty garden and the communal pool. There is also access into the double garage (electric doors) from the unit.

Upstairs is a nice landing area and 4 bedrooms served by 2 bathrooms (main en-suite). The main bedroom opens onto a lovely balcony with views. Remote access.

The home is highly recommended.

## Features

### Interior

Bedrooms	4
Bathrooms	2.5
Kitchens	1
Recep. Rooms	4
Studies	1

### Exterior

Garages	2
Security	Yes
Pool	Yes

### Sizes

Floor Size	351m <sup>2</sup>
------------	-------------------